

# HyperLadder™ 25bp

Shipping: Room Temperature

Catalog numbers

Batch No.: See vial

BIO-33057: 100 Lanes

BIO-33031: 200 Lanes

BIO-33032: 500 Lanes

**meridian** BIOSCIENCE™

## Storage and stability:

HyperLadder 25bp is shipped at room temperature. On arrival store at -20°C for optimum stability.

## Expiry:

When stored under the recommended conditions and handled correctly, band quality is retained until the expiry date on the outer box label.

## Safety precautions:

Please refer to the material safety data sheet for further information.

## Quality control specifications:

HyperLadder 25bp is extensively tested quality prior to release.

## Notes:

For research or further manufacturing use only.

## Trademark:

HyperLadder is a trademark of Bioline

## Features

- Easy mass determination
- 12 bands from 25 bp – 500 bp
- Ready-to-use format
- Optional mass determination

## Description

HyperLadder 25bp is a ready-to-use molecular weight marker for size determination of DNA fragments. It is especially designed for short fragments such as apoptotic DNA oligonucleotides. This ready-to-use format reduces handling steps and saves time; simply transfer HyperLadder 25bp from the vial to the gel.

HyperLadder 25bp produces a pattern of 12 regularly spaced bands, ranging from 25 bp to 500 bp. To allow easy identification and orientation, the 100 bp and 200 bp bands have the highest intensity. Optionally the HyperLadder can be used for mass determination.

A 5x sample-loading buffer is supplied for your convenience. Under no circumstances should it be used to dilute/load ladder.

## Components

Product	100 Lanes	200 Lanes	500 Lanes
HyperLadder™ 25bp	500 µL	2 x 500 µL	5 x 500 µL
5x Sample Loading Buffer	1 mL	1 mL	1 mL

## Associated Products

Product	Pack size	Cat. No.
Agarose	100g	BIO-41026
Agarose Tablets	150g	BIO-41028

## Protocol

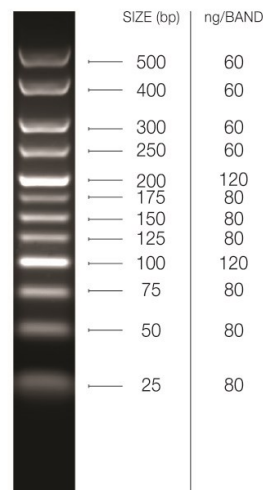
Vortex the tube and use 5 µL per lane. There is no need to add loading buffer to the ladder.

Use 5x loading buffer for sample loading, under no circumstances should it be used for diluting the ladder. The blue dye in the loading buffer runs at approximately 4 bp on a 1% gel

## Effective DNA Separation Range - Agarose Gels

Recommended % Agarose (w/v)	Effective Separation Range of Linear DNA* (bp)
0.3	5,000-60,000
0.5	1,000-20,000
0.7	800-12,000
1.0	500-10,000
1.2	400-7,000
1.5	200-3,000
2.0	100-2,000
2.5	50-100
3.0	10-75

\* Circularized plasmids can be cut and linearized by an appropriate restriction enzyme to measure their molecular weight



Bioline Reagents Ltd  
UNITED KINGDOM

Tel: +44(0)20 8830 5300  
Fax: +44 (0)20 8452 2822

Meridian Life science Inc.  
USA

Tel: +1 901 382 8716  
Fax: +1 901 382 0027

Bioline GmbH  
GERMANY

Tel: +49 (0)3371 60222 00  
Fax: +49(0)3371 60222 01

Bioline (Aust) Pty. Ltd  
AUSTRALIA

Tel: +61 (0)2 9209 4180  
Fax: +61 (0)2 9209 4763